



SpeedFace-V3L Series

Linux-Based Hybrid-Biometric Access Control & Time and Attendance Terminal with Visible Light Facial Recognition



Facial Recognition



RFID



Fingerprint



QR Code

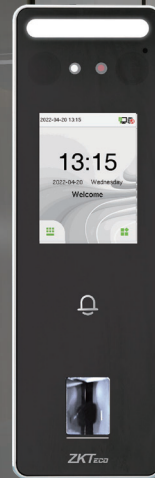
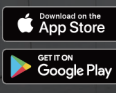


IP65 dust & waterproof rating

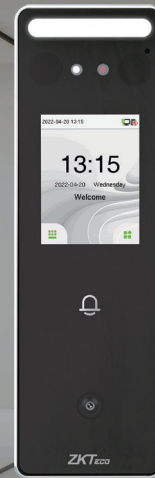
Compatible with



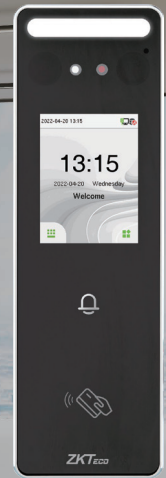
Compatible with



SpeedFace-V3L



SpeedFace-V3L [QR]



SpeedFace-V3L [RFID]

SpeedFace-V3L is an efficient Linux-based access control terminal, utilizing visible light technology for a comprehensive security management.

This terminal provides dual authentication methods, including facial recognition and fingerprint verification. Also, SpeedFace-V3L is equipped with an ultimate anti-spoofing algorithm for facial recognition against all types of fake photos and videos attack.

Additionally, there are different versions of SpeedFace-V3L to satisfy your needs. SpeedFace-V3L [QR] comes with a QR code module, while the SpeedFace-V3L[RFID] supports RFID cards verification function.

SpeedFace-V3L series is also compatible with ZKBio Access software and ZKBio Zlink Mobile APP & ZKBio Zlink-Web when switching to BEST protocol.

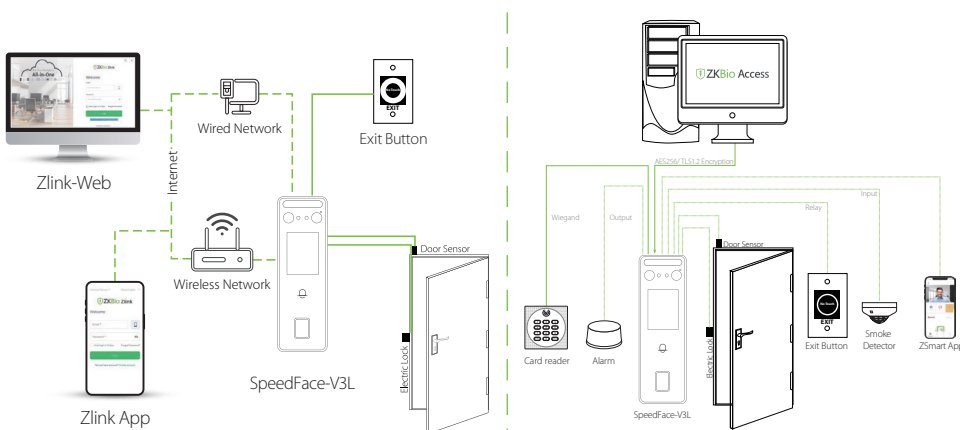
Features

- An IP65 protection rating with waterproof and dustproof, can fully operate under extreme weather
- Multiple authentication methods: facial recognition, fingerprint, scramble QR code and RFID cards verification
- Available card modules: 125KHz ID card / 13.56MHz IC card
- Hidden supplement light design with adjustable brightness
- On board web server for system configuration
- High capacity for necessary record storage. Offers 200,000 transaction logs (Facial templates: 500 / Fingerprint capacity: 3,000 / RFID card capacity: 3,000)

Specifications

Product Model	SpeedFace-V3L	SpeedFace-V3L[QR]	SpeedFace-V3L[RFID]
Display	2.4-inch touch Screen	2.4-inch touch Screen	2.4-inch touch Screen
Biometric	Face/Fingerprint	Face Only	Face Only
QR Code Module	/	QR code, Bar code, PDF417(Optional), Data matrix(Optional), MicroPDF417(Optional), Aztec(Optional)	/
RFID	ID card(Optional), IC card(Optional)	ID card(Optional), IC card(Optional)	ID card(Standard), IC card(Optional)
User Capacity	3,000 (Optional: 10,000)	3,000 (Optional: 10,000)	3,000 (Optional: 10,000)
Card Capacity	3,000 (Optional: 10,000)	3,000 (Optional: 10,000)	3,000 (Optional: 10,000)
Face Templates	500 (Optional: 1,500)	500 (Optional: 1,500)	500 (Optional: 1,500)
Fingerprint Capacity	3,000 (Optional: 5,000)	/	/
Logs Capacity	200,000	200,000	200,000
Facial Recognition Algorithm	ZKFace 3.5		
Facial Recognition Speed	<1s		
Facial Recognition Method	1:N, 1:1		
Facial Recognition Distance	0.5m to 2m		
Communication	TCP/IP, WiFi(Optional), Wiegand Input/Output,RS485		
Operation System	Linux		
Standard Functions	ADMS, DST, Camera, 14-digit User ID, Access Levels, Groups, Holidays, Anti passback, Record Query, Tamper Switch Alarm, Multiple Verification Methods		
Hardware	1.2GHz Dual Core CPU, 256MB RAM/512MB Flash, 1MP Binocular Camera Adjustable LED Fill Light		
Access Control Interface	3rd Party Electric Lock, Door Sensor, Exit Button, Alarm Output, Auxiliary Input		
Power Supply	12V 3A	12V 3A	12V 3A
Ingress Protection Rating	IP65	IP65	IP65
Operating Temperature	-5°C to 45°C	-5°C to 45°C	-5°C to 45°C
Operating Humidity	10% to 90% RH	10% to 90% RH	10% to 90% RH
Dimensions(L*W*D)	185*58.5*20mm	185*58.5*20mm	185*58.5*20mm
Supported Softwares	PUSH Protocol: ZKBioAccess / ZKBioTalk ; ZSmart BEST Protocol: ZKBio Zlink		
Certifications	ISO14001, ISO9001, CE, FCC, RoHS		

Configuration



BEST Protocol

PUSH Protocol

Dimensions (mm)

